

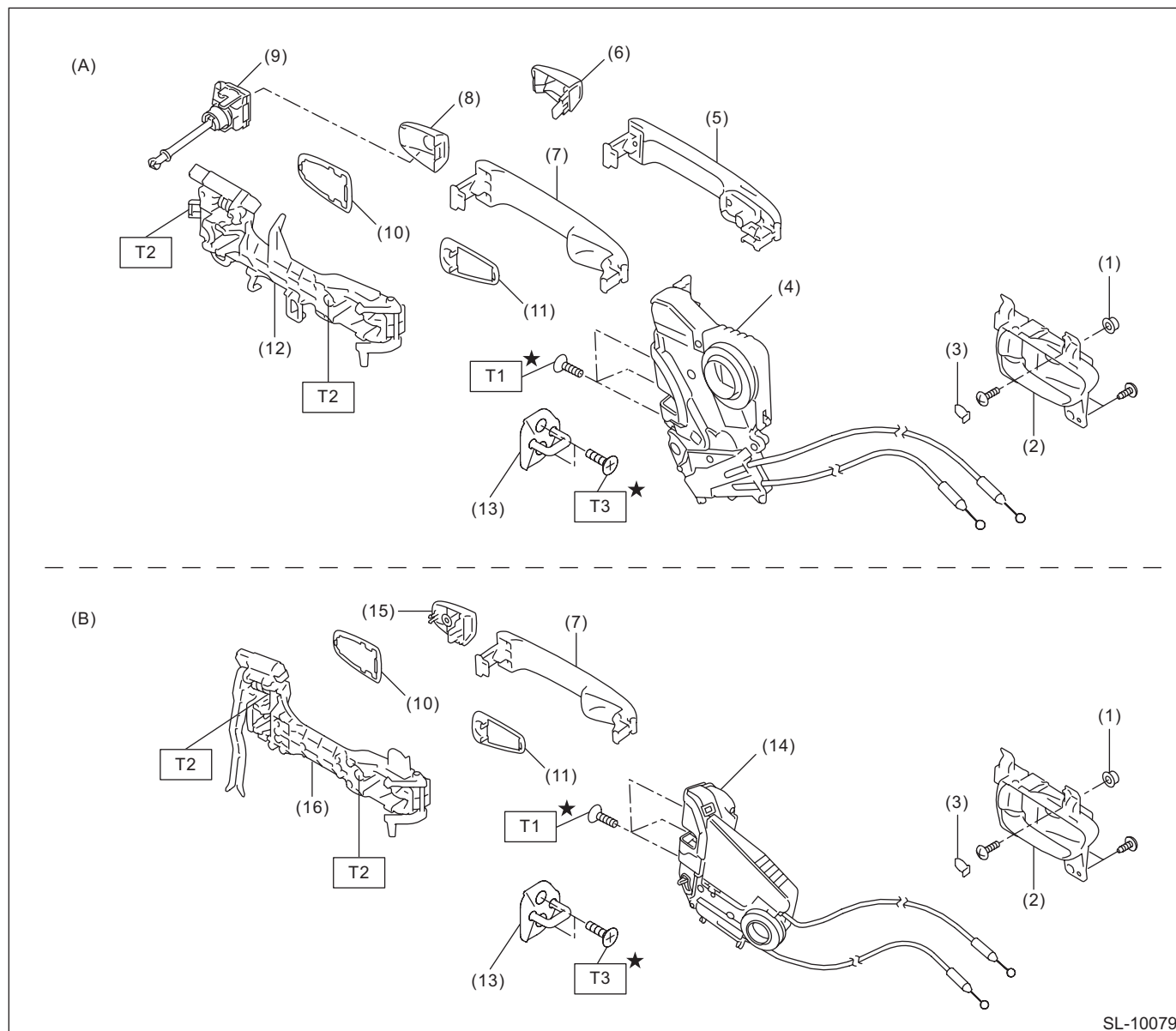
# General Description

## SECURITY AND LOCKS

### 1. General Description

#### A: COMPONENT

#### 1. DOOR LOCK ASSEMBLY



SL-10079

(A) Front

(B) Rear

(1) Grommet - screw

(8) Cover - handle front outer (driver's seat)

(15) Cover - handle rear outer

(2) Remote ASSY - door

(9) Key lock - door (driver's seat only)

(16) Frame ASSY - rear door outer

(3) Cap remote

(10) Spacer - door handle outer B

**Tightening torque: N-m (kgf-m, ft-lb)**

(4) Latch & actuator ASSY - front

(11) Spacer - door handle outer A

**T1: 6.5 (0.66, 4.8)**

(5) Handle - door outer (model with keyless access)

(12) Frame ASSY - front door outer

**T2: 7.5 (0.76, 5.5)**

(6) Cover - handle front outer (passenger's seat)

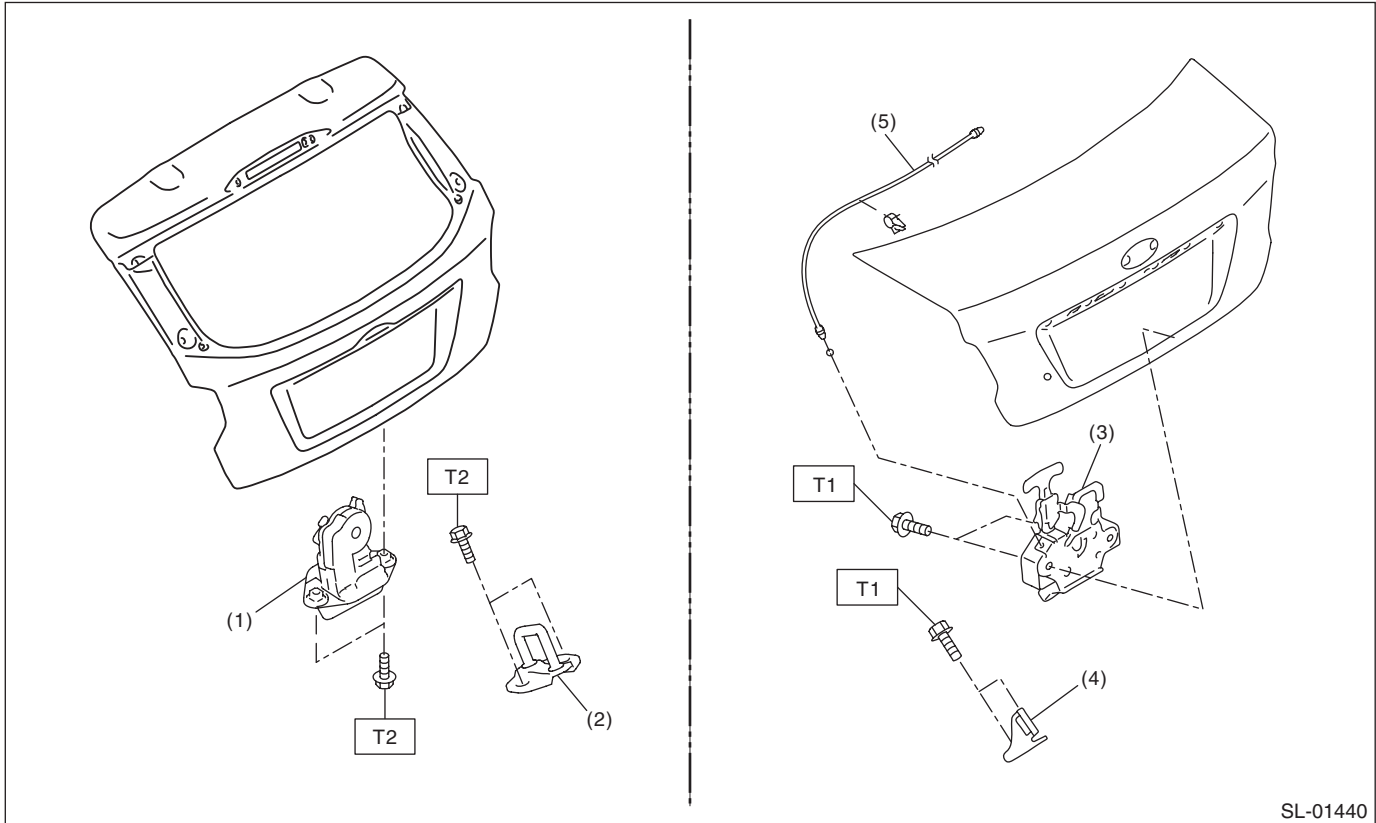
(13) Striker - door

**T3: 18 (1.84, 13.3)**

(7) Handle - door outer (model without keyless access)

(14) Latch & actuator ASSY - rear

### 2. REAR GATE LOCK AND TRUNK LID LOCK



SL-01440

- |                                  |                            |
|----------------------------------|----------------------------|
| (1) Latch & actuator - rear gate | (4) Striker - trunk lid    |
| (2) Striker - rear gate          | (5) Cable ASSY - trunk lid |
| (3) Lock ASSY - trunk lid        |                            |

**Tightening torque: N·m (kgf-m, ft-lb)**

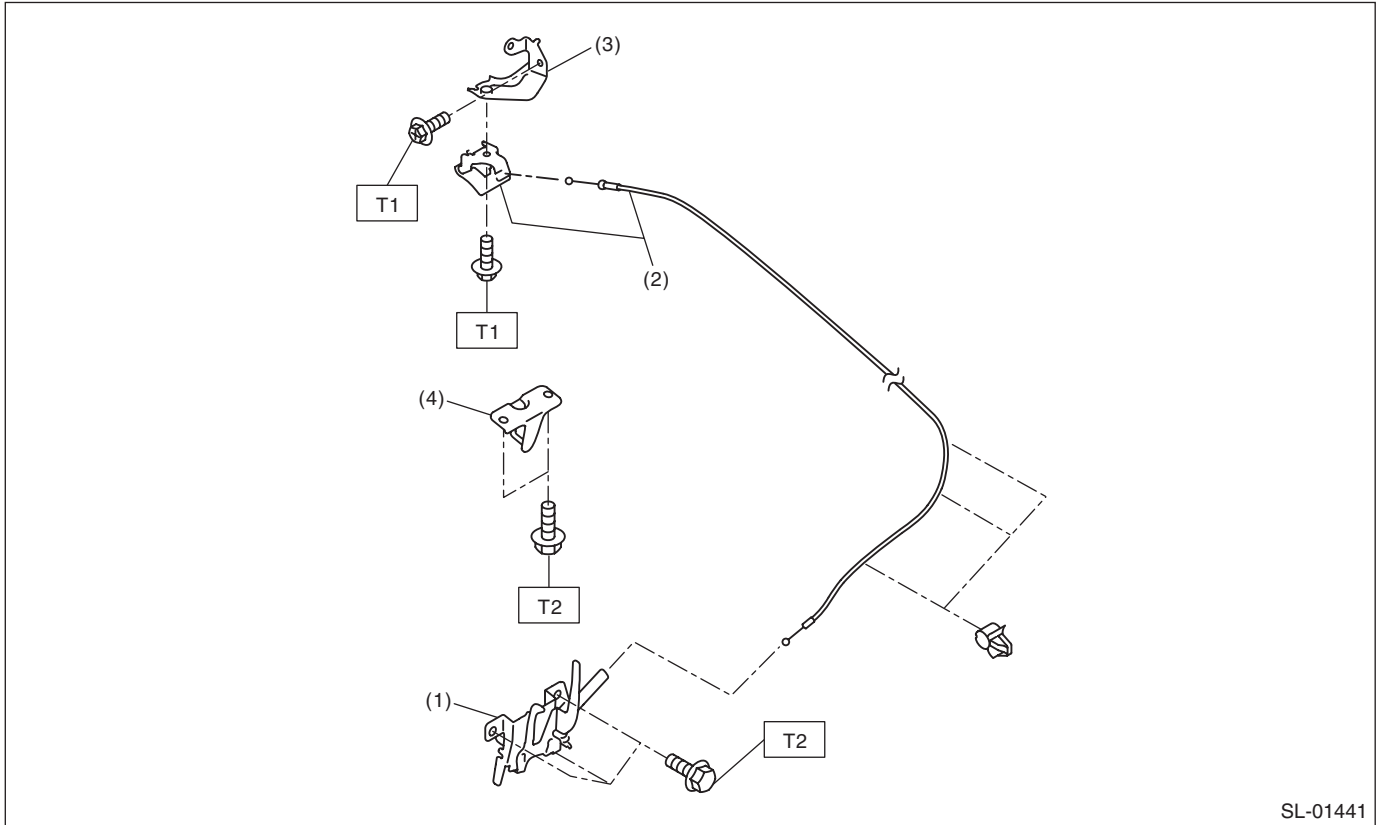
**T1: 7.5 (0.76, 5.5)**

**T2: 25 (2.55, 18.4)**

# General Description

## SECURITY AND LOCKS

### 3. FRONT HOOD LOCK



- (1) Lock ASSY - front hood  
(2) Cable - front hood

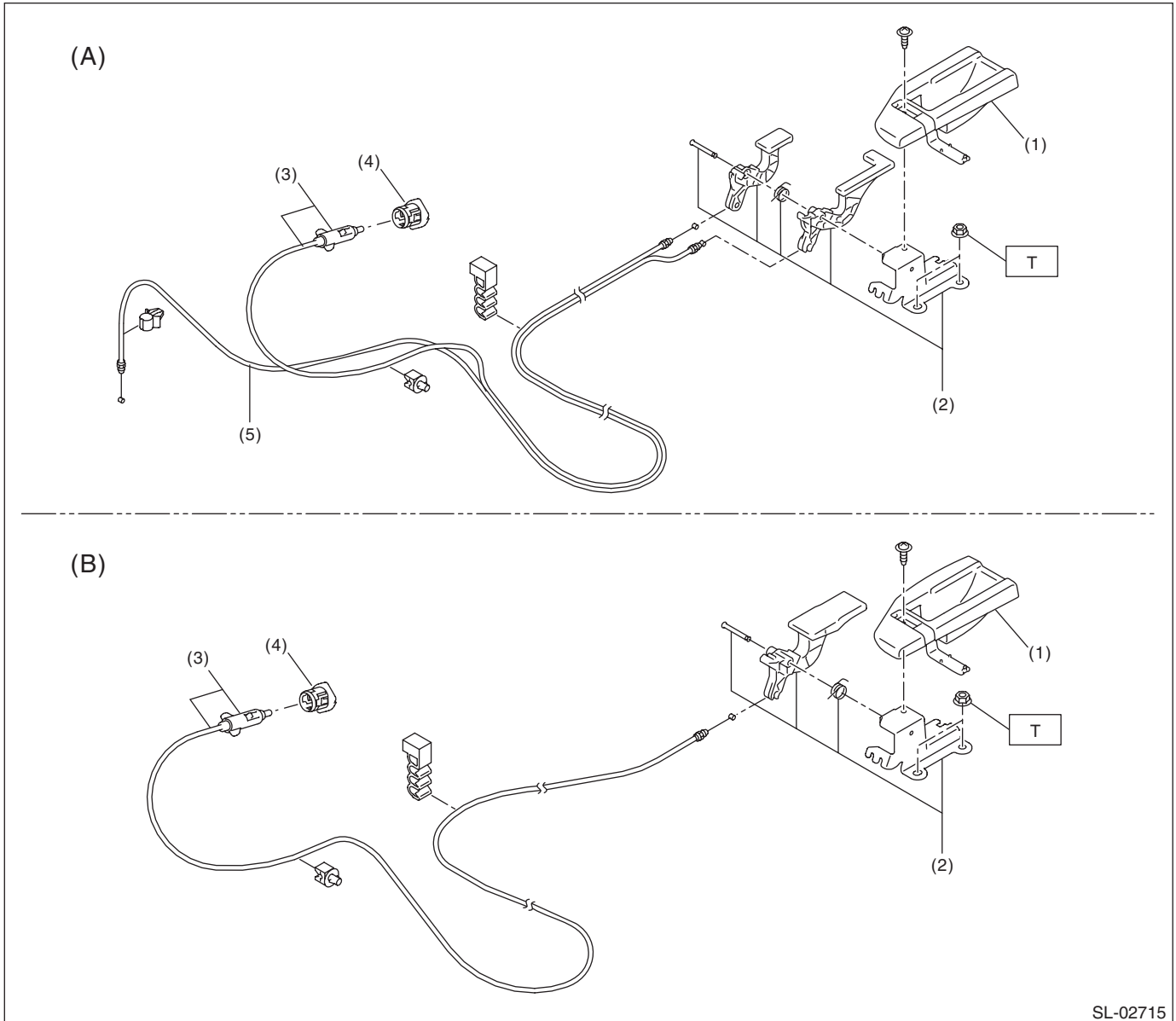
- (3) Bracket - opener handle  
(4) Striker - front hood

***Tightening torque: N·m (kgf-m, ft-lb)***

***T1: 7.5 (0.76, 5.5)***

***T2: 33 (3.36, 24.3)***

### 4. REMOTE OPENER



(A) 4 door model

(B) 5 door model/XV model

- (1) Cover - handle
- (2) Pull handle - opener
- (3) Cable ASSY - fuel

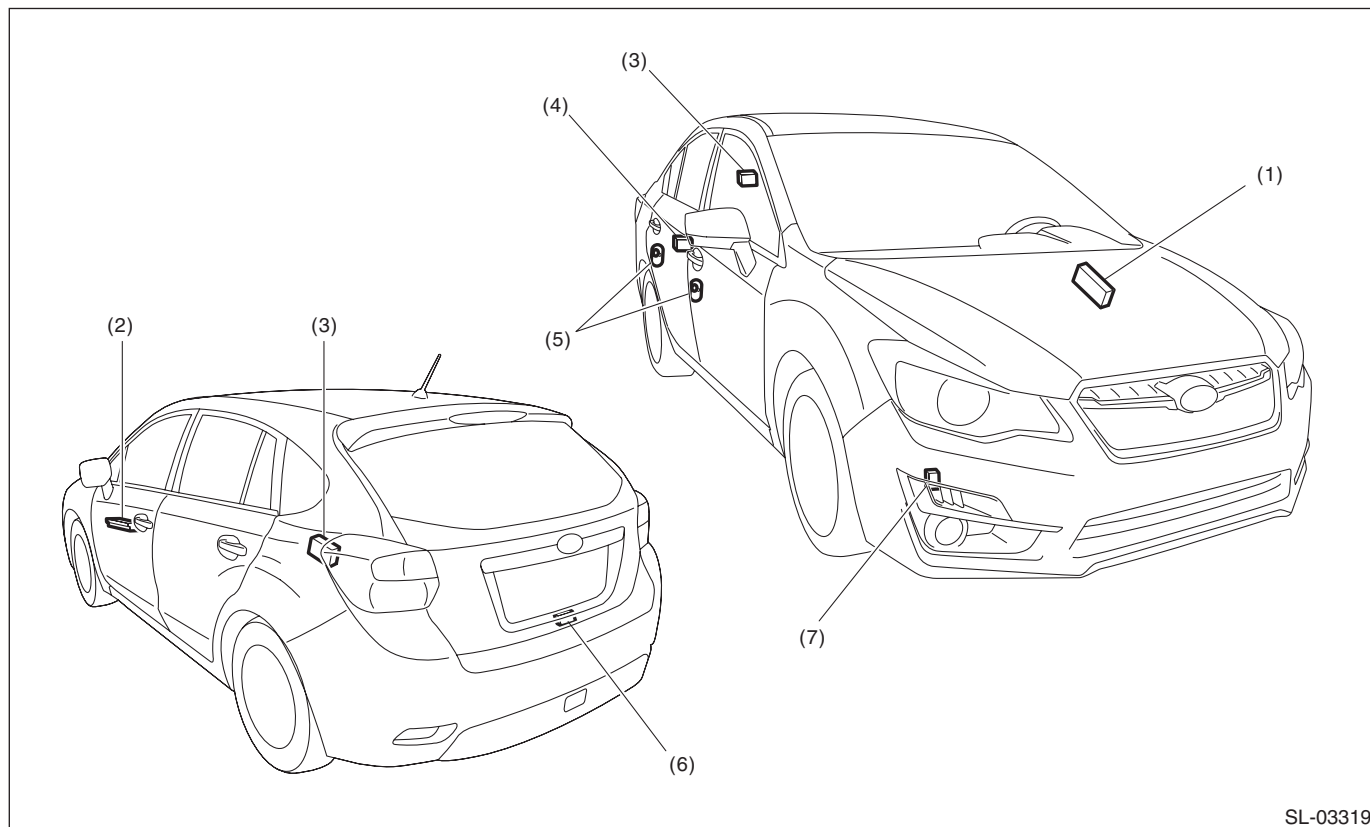
- (4) Holder
- (5) Cable ASSY - trunk lid

**Tightening torque: N·m (kgf·m, ft·lb)**  
**T: 7.5 (0.76, 5.5)**

# General Description

## SECURITY AND LOCKS

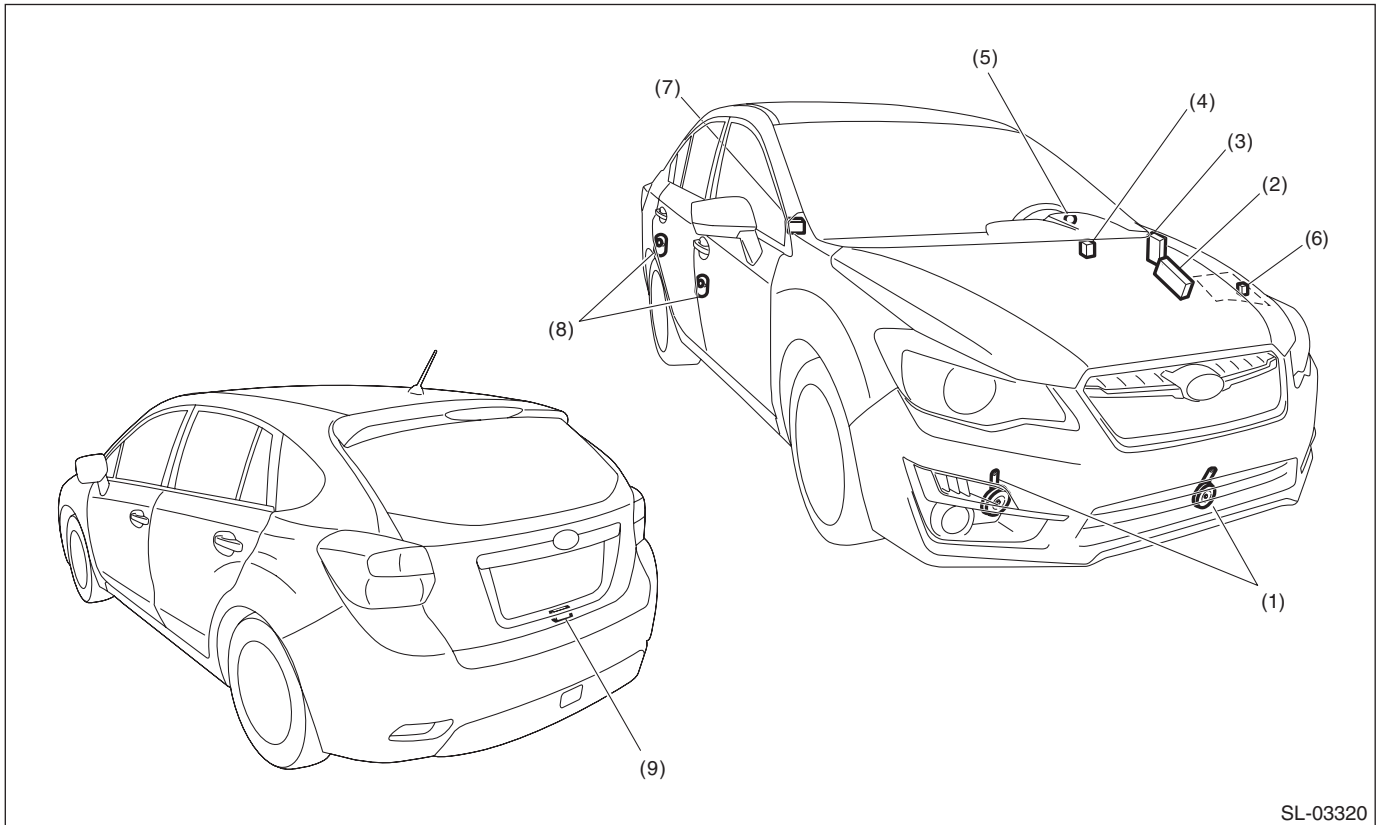
### 5. KEYLESS ENTRY SYSTEM



SL-03319

- |                                  |  |   |
|----------------------------------|--|---|
| (1) Body integrated unit         | (4) Trunk lid latch switch<br>(4 door model) | (6) Rear gate latch switch<br>(5 door model/XV model) |
| (2) Power window main switch     | (5) Door switch                              | (7) Keyless buzzer                                    |
| (3) Keyless entry control module |  |   |

### 6. SECURITY SYSTEM



SL-03320

- |  |  |   |
|--|--|---|
| (1) Horn   | (4) Turn signal and hazard module                      | (7) Trunk lid latch switch<br>(4 door model)          |
| (2) Body integrated unit   | (5) Security indicator light<br>(in combination meter) | (8) Door switch                                       |
| (3) Impact sensor (driver's seat instru-<br>ment panel side) (dealer option) | (6) Horn relay (in main fuse box)                      | (9) Rear gate latch switch<br>(5 door model/XV model) |

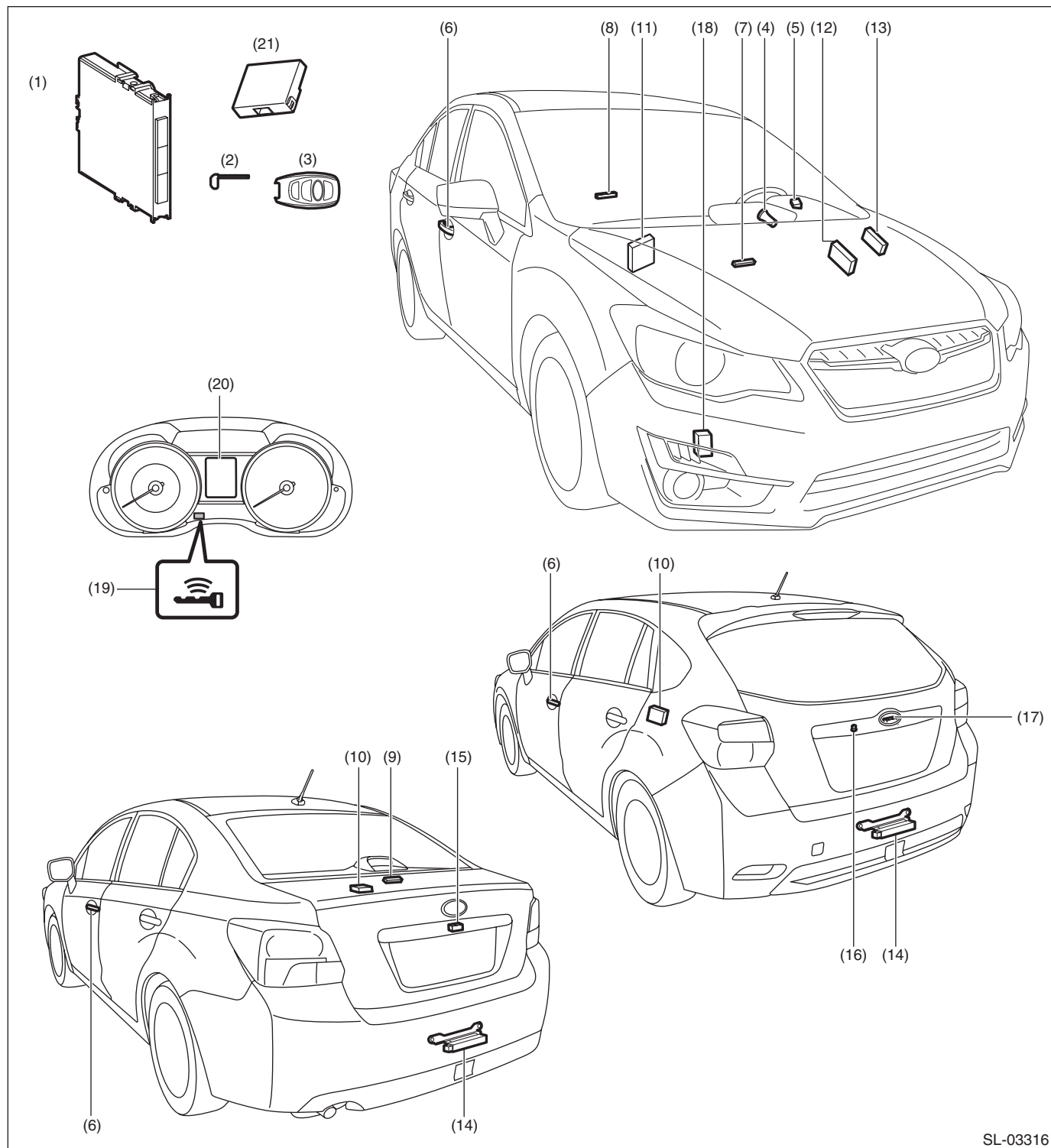
## SECURITY AND LOCKS

## 7. KEYLESS ACCESS WITH PUSH BUTTON START SYSTEM

NOTE:

Except for model without keyless access.

- Gasoline engine model



# General Description

## SECURITY AND LOCKS

(1) Keyless access CM	(8) Center interior antenna*1 or rear interior antenna*2	(15) Trunk opener button*1
(2) Mechanical key	(9) Rear interior antenna*1	(16) Rear lock button*2
(3) Access key	(10) Receiver	(17) Rear gate opener button*2
(4) Push button ignition switch	(11) ECM	(18) Access buzzer
(5) Steering lock CM	(12) TCM	(19) Access key warning light
(6) Front outer handle (front exterior antenna) – Touch sensor (lock) – Touch sensor (unlock)	(13) Body integrated unit	(20) Multi-information display
(7) Front interior antenna	(14) Rear exterior antenna	(21) ID code box (For C0 and C5 models only)

\*1: 4 door model

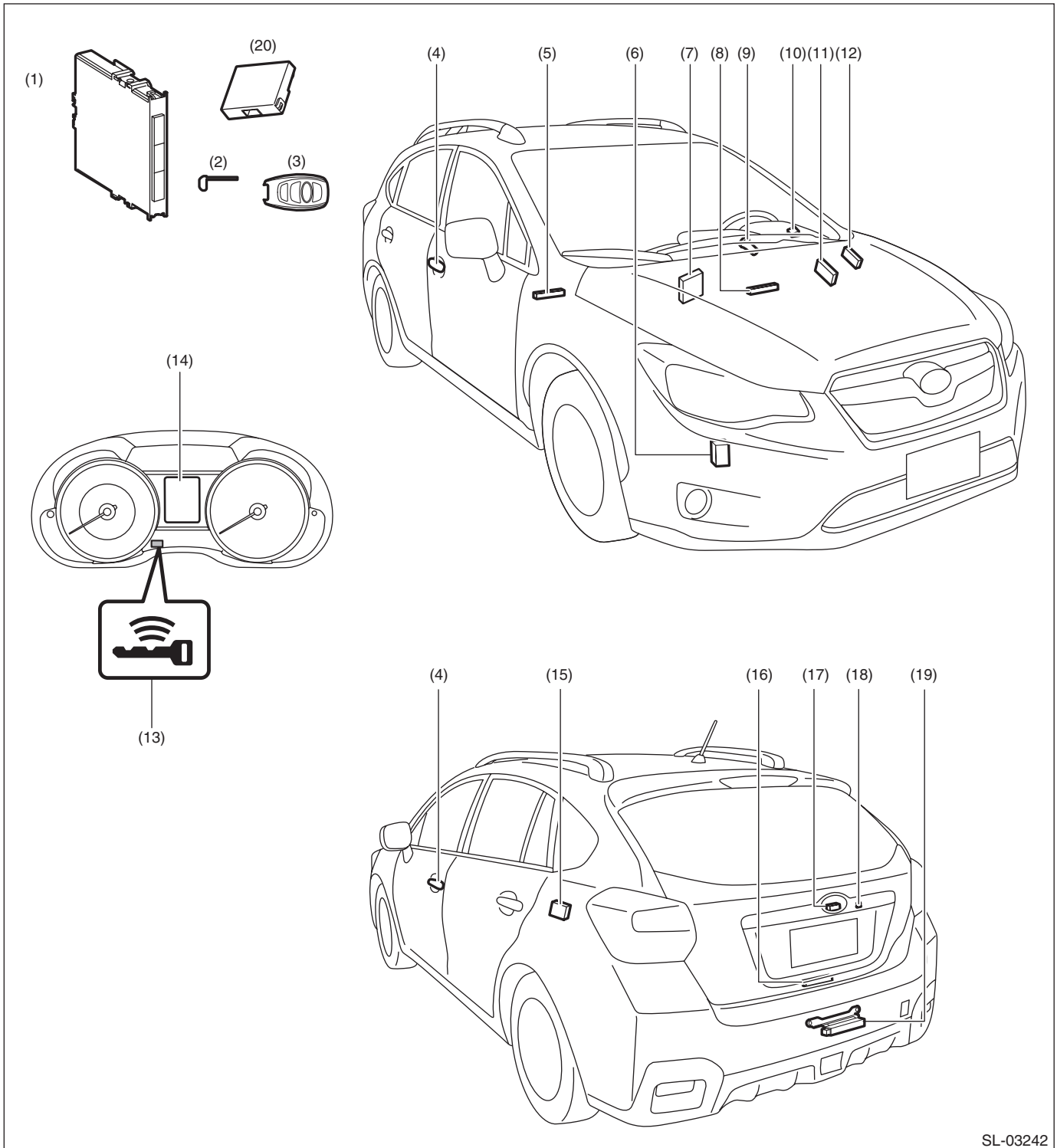
\*2: 5 door model



# General Description

## SECURITY AND LOCKS

- HEV model



SL-03242

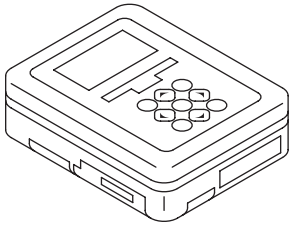
- |   |                                 |  |
|---|---------------------------------|--|
| (1) Keyless access CM   | (8) Front interior antenna      | (15) Receiver                                  |
| (2) Mechanical key  | (9) Push button ignition switch | (16) Rear interior antenna                     |
| (3) Access key  | (10) Steering lock CM           | (17) Rear gate opener button                   |
| (4) Front outer handle (front exterior antenna)<br>– Touch sensor (lock)<br>– Touch sensor (unlock) | (11) TCM                        | (18) Rear lock button                          |
| (5) Center interior antenna   | (12) Body integrated unit       | (19) Rear exterior antenna                     |
| (6) Access buzzer   | (13) Access key warning light   | (20) ID code box<br>(For C0 and C5 model only) |
| (7) ECM   | (14) Multi-information display  |  |

## B: CAUTION

- Before disassembling or reassembling parts, always disconnect the battery ground cable from battery. When replacing the audio, control module and other parts provided with memory functions, record the memory contents before disconnecting the battery ground cable. Otherwise, the memory is cleared.
- Reassemble the parts in the reverse order of disassembly procedure unless otherwise indicated.
- Connect the connectors securely during reassembly.
- After reassembly, make sure that the each component operates normally.
- If any immobilizer related part has been replaced, make sure to register the immobilizer.
- Do not use any electrical test equipment on the airbag system wiring harnesses and connector circuits.
- Be careful not to damage the airbag system wiring harness when servicing the ignition key cylinder.
- If the steering wheel and steering angle sensor (steering roll connector) are removed, perform “VDC sensor midpoint setting mode” of the VDC. <Ref. to VDC-26, VDC SENSOR MIDPOINT SETTING MODE (MODELS WITHOUT EyeSight), ADJUSTMENT, VDC Control Module and Hydraulic Control Unit (VDCCM&H/U).>

## C: PREPARATION TOOL

### 1. SPECIAL TOOL

ILLUSTRATION	TOOL NUMBER	DESCRIPTION	REMARKS
 ST1B022XU0	1B022XU0	SUBARU SELECT MONITOR III KIT	Used for setting of each function and trouble-shooting for electrical system.  NOTE: For detailed operation procedures of SUBARU SELECT MONITOR III, refer to “PC application help for Subaru Select Monitor”.

### 2. GENERAL TOOL

TOOL NAME	REMARKS
Circuit tester	Used for measuring resistance and voltage.
Drill	Used for replacing ignition key lock.
Reverse tap	Used for replacing ignition key lock.
TORX® T30	Used for removing and installing door outer handle cover and frame assembly.
Clip remover	Used for removing trim clip.